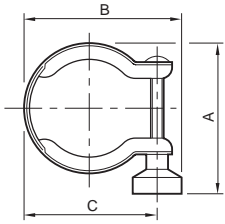


# NW fittings



Size	A	B	C	D	E	F	Ordering Number
------	---	---	---	---	---	---	-----------------

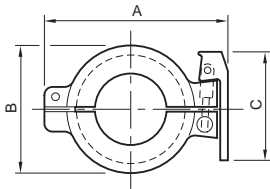
## Clamping Ring

Copper free

NW10/16	44	46	34				C10512501
NW20/25	60	60	48				C10514501
NW32/40	73	75	63				C10516501
NW50	90	96	84				C10517501

Stainless steel

NW10/16	44	46	34				C10512401
NW20/25	60	60	48				C10514401
NW32/40	73	75	63				C10516401
NW50	90	96	84				C10517401



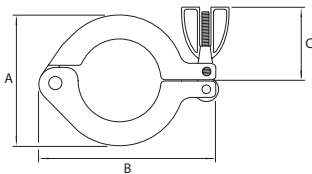
## Hinged Clamp

aluminium

NW10/16	68	40	57				C10512402
NW20/25	80	50	57				C10514402
NW32/40	95	66	57				C10516402

Polymer

NW10/16	68	40	57				C10512303
NW20/25	80	50	57				C10514303
NW32/40	95	66	57				C10516303
NW50	125	86	57				C10517303



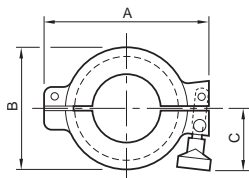
## Swing Clamp

aluminium

NW10/16	62	40	35				C10512403
NW20/25	75	50	35				C10514403
NW32/40	90	66	35				C10516403
NW50	120	86	35				C10517403

Polymer

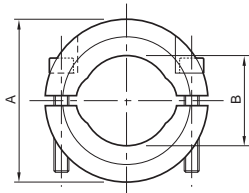
NW10/16	62	40	35				C10512304
NW20/25	75	50	35				C10514304
NW32/40	90	66	35				C10516304
NW50	120	86	35				C10517304



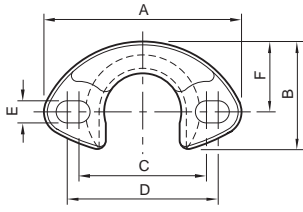
## Clamp (Metal Seals)

Stainless steel

NW10/16	54	22					C10512404
NW20/25	64	32					C10514404
NW32/40	82	47					C10516404
NW50	112	62					C10517404

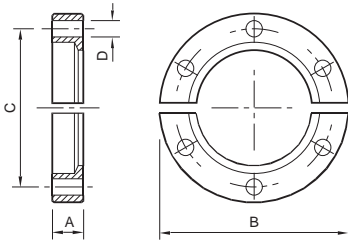


We recommend the use of thread lubricant, 1764 00030.



\* Stainless steel; † Non slotted

Size	A	B	C	D	E	F	Ordering Number
<b>"C" Clamp</b>							
Nickel plated brass including screw pack							
NW10/16	59	35	38	45	6.3	22	C11002340
NW25	70	44	54	54†	8.3	25.4	C11004340
NW40*	100	73.5	79	81	8.3	50	C11005340

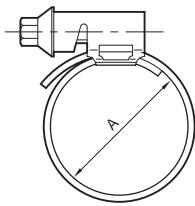


#### Bulkhead Clamp

aluminium

					Europe	N. America
NW10/16	9.2	50.8	38.1	5.1	C10512007	C90512007
NW25	9.8	60.3	48.0	5.1	C10514007	C90514007
NW40	9.3	74.6	62.0	5.1	C10516007	C90516007
NW50	10.3	95.2	83.0	5.1	C10517007	C90517007

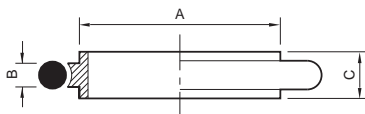
All sizes supplied with  
6 x 10-32 UNF x 5/8" hex head stainless steel bolts  
6 x 10-32 UNF stainless steel plain washers



#### PVC Hose Clamp

Stainless steel

NW10/16	25	C10512408
NW25	36	C10514408
NW40	50	C10516408
NW50	60	C10517408



#### Centring Ring with O-Ring

Fluoroelastomer/stainless steel carrier

NW10	12	3.9	8	C10511395
NW16	17	3.9	8	C10512395
NW25	26	3.9	8	C10514395
NW40	41	3.9	8	C10516395
NW50	52	3.9	8	C10517395

Fluoroelastomer/aluminium carrier

NW10	12	3.9	8	C10511397
NW16	17	3.9	8	C10512397
NW25	26	3.9	8	C10514397
NW40	41	3.9	8	C10516397

Fluoroelastomer/polymer carrier

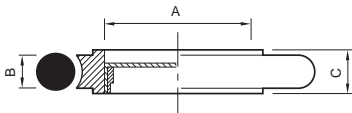
NW10	12	3.9	8	C10511394
NW16	17	3.9	8	C10512394
NW25	26	3.9	8	C10514394
NW40	41	3.9	8	C10516394

Nitrile/stainless steel carrier

NW10	12	3.9	8	C10511396
NW16	17	3.9	8	C10512396
NW25	26	3.9	8	C10514396
NW40	41	3.9	8	C10516396
NW50	52	3.9	8	C10517396

Size	A	B	C	D	E	F	Ordering Number
Nitrile/aluminium carrier							
NW10	12	3.9	8				C10511398
NW16	17	3.9	8				C10512398
NW25	26	3.9	8				C10514398
NW40	41	3.9	8				C10516398

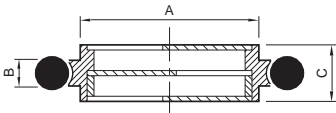
Nitrile/polymer carrier							
NW10	12	3.9	8				C10511393
NW16	17	3.9	8				C10512393
NW25	26	3.9	8				C10514393
NW40	41	3.9	8				C10516393



#### Centring Ring with Screen

Fluoroelastomer/stainless steel AISI 316L DIN 1.4404 Stainless Steel wire Ø0.5 Aperture size 1 mm<sup>2</sup>

NW16	9.5	3.9	8				C10512085
NW25	19.5	3.9	8				C10514085
NW40	32	3.9	8				C10516085
NW50	43	3.9	8				C10517085



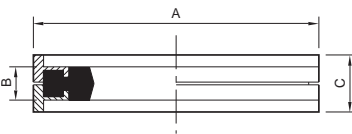
#### Centring Ring with Optical Baffle

Fluoroelastomer/stainless steel AISI 304L DIN 1.4301

NW25	26	3.9	8.5				D02110000
------	----	-----	-----	--	--	--	-----------

#### Centring Ring Sintered Filter

NW10							D02158020
NW40							D15405110



#### Co-Seal

Nitrile/aluminium carrier

NW10/16	32	3.9	7				B27158480
NW20/25	42	3.9	7				B27158490
NW32/40	57	3.9	7				B27158500

Nitrile/polymer carrier

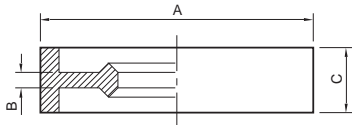
NW10/16	32	3.9	7				B27158426
NW20/25	42	3.9	7				B27158447
NW32/40	57	3.9	7				B27158454
NW50	77.5	3.9	7				B27158467

Fluoroelastomer/aluminium carrier

NW10/16	32	3.9	7				B27158481
NW20/25	42	3.9	7				B27158491
NW32/40	57	3.9	7				B27158501

Fluoroelastomer/polymer carrier

NW10/16	32	3.9	7				B27158427
NW20/25	42	3.9	7				B27158448
NW32/40	57	3.9	7				B27158453
NW50	77.5	3.9	7				B27158466

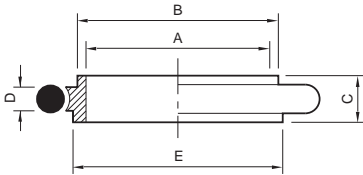


Size	A	B	C	D	E	F	Ordering Number
------	---	---	---	---	---	---	-----------------

### Metal Seals

aluminium  
Use with clamps (metal seals) C105-XX-404.

NW10/16	32	2.0	7				C27159004
NW20/25	42	2.0	7				C27159005
NW32/40	57	2.0	7				C27159006
NW50	77	2.0	7				C27159007



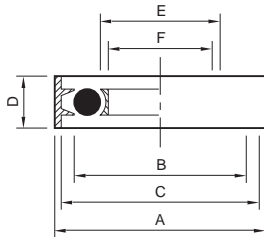
### Adapting Centring Ring with O-Ring

Nitrile

NW10/16 stainless steel	10	12	8	3.9	17		C10512346
NW10/16 polymer	10	12	8	3.9	17		C10512349

Fluoroelastomer

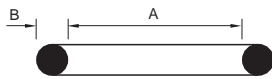
NW10/16 stainless steel	10	12	8	3.9	17		C10512345
NW10/16 polymer	10	12	8	3.9	17		C10512350



### NW Trapped O-Ring

Fluoroelastomer/stainless steel/aluminium

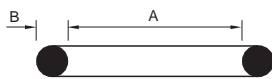
NW10/16	32.5	27.5	30.2	7	18.5	16	C10512490
NW25	42.5	37.5	40.2	7	28.5	25	C10514490
NW40	57.5	52.0	55.2	7	43	40	C10516490
NW50	77.5	64.5	75.2	7	55.5	50	C10517490



### O-Ring (Pack of 10)

Nitrile

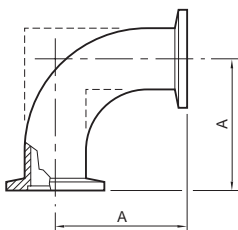
NW10	15	5					H02124012
NW16	18	5					H02124013
NW25	28	5					H02124015
NW40	42	5					H02124017
NW50	50	5					H02124018



### O-Ring (Pack of 5)

Fluoroelastomer

NW10	15	5					H02124032
NW16	18	5					H02124033
NW25	28	5					H02124035
NW40	42	5					H02124037
NW50	50	5					H02124038



▲ Dimensions shown dotted in diagram

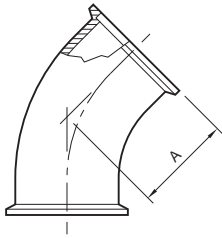
### Elbow 90°

aluminium BS LM25 DIN 3.2371▲

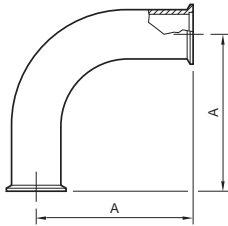
NW10	30						C10511410
NW16	40						C10512410
NW25	50						C10514410
NW40	65						C10516410

Stainless Steel AISI 316L DIN 1.4404

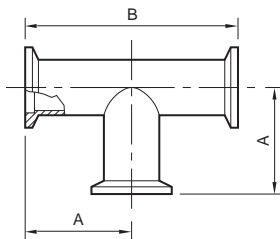
NW10	30						C10511420
NW16	40						C10512420
NW25	50						C10514420
NW40	65						C10516420
NW50	70						C10517420



Size	A	B	C	D	E	F	Ordering Number
<b>Elbow 45°</b>							
Stainless Steel AISI 316L DIN 1.4404							
NW16	23.2						C10512405
NW25	28.5						C10514405
NW40	42.7						C10516405
NW50	50.6						C10517405

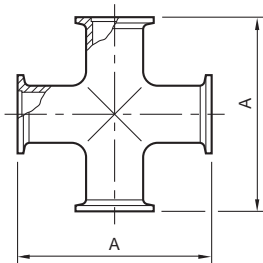


<b>Long Radius Elbow</b>							
Stainless Steel AISI 316L DIN 1.4404							
NW40	130						C10516406
NW50	140						C10517406



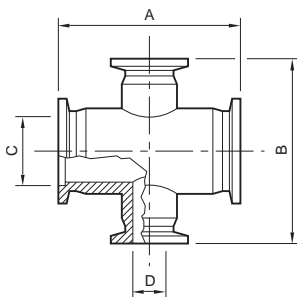
<b>T-Piece</b>							
aluminium BS LM25 DIN 3.2371							
NW10	30	60					C10511411
NW16	40	80					C10512411
NW25	50	100					C10514411
NW40	65	130					C10516411

Stainless Steel AISI 316L DIN 1.4404							
NW10	30	60					C10511421
NW16	40	80					C10512421
NW25	50	100					C10514421
NW40	65	130					C10516421
NW50	70	140					C10517421

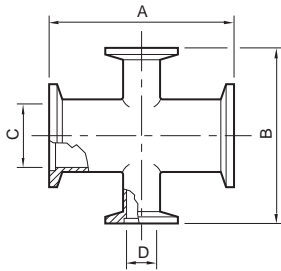


<b>Cross Piece</b>							
aluminium BS LM25 DIN 3.2371							
NW10	60						C10511412
NW16	80						C10512412
NW25	100						C10514412
NW40	130						C10516412

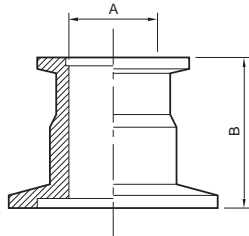
Stainless Steel AISI 316L DIN 1.4404							
NW10	60						C10511422
NW16	80						C10512422
NW25	100						C10514422
NW40	130						C10516422
NW50	140						C10517422



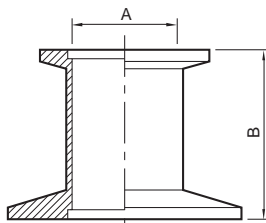
<b>Reducing Cross</b>							
aluminium ISO 6082 DIN 3.2315							
NW25/10	70	70	26.2	12.2			C10514413
NW40/10	80	90	41.2	12.2			C10516413



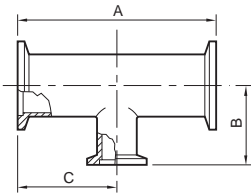
Size	A	B	C	D	E	F	Ordering Number
<b>Reducing Cross</b>							
Stainless Steel AISI 316L DIN 1.4404							
NW25/10	70	70	26.2	12.2			C10514423
NW25/16	100	80	26.2	17.2			C10514424
NW40/16	130	80	41.2	17.2			C10516424
NW40/25	130	100	41.2	26.2			C10516425
NW50/25	140	100	52.2	26.2			C10517425



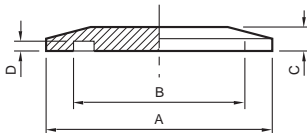
<b>Reducing Piece</b>							
aluminium ISO 6082 DIN 3.2315							
NW25/10	10	40					C10514436
NW25/16	16	40					C10514437
NW40/25	24	40					C10516439
NW40/16	16	40					C10516438
NW50/16	16	40					C10517040
NW50/25	24	40					C10517043
NW50/40	41	40					C10517041



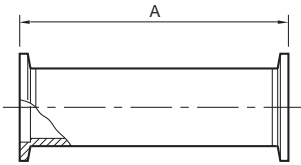
<b>Reducing Piece</b>							
Stainless Steel AISI 316L DIN 1.4404							
NW25/10	10	40					C10514446
NW25/16	16	28					C10514447
NW40/16	16	28					C10516448
NW40/25	24	28					C10516449
NW50/16	16	28					C10517450
NW50/25	24	40					C10517051
NW50/40	40	28					C10517452



<b>Reducing T-Piece</b>							
Stainless Steel AISI 316L DIN 1.4404							
NW25/16	100	40	50				C10514427
NW40/16	130	40	65				C10516428
NW40/25	130	50	65				C10516429
NW50/16	140	50	70				C10517430
NW50/25	140	65	70				C10517431



<b>Blanking Flange</b>							
aluminium BS LM 25 DIN 3.2371							
NW10	30	12.2	6	2.5			C10511368
NW16	30	17.2	6	2.5			C10512368
NW25	40	26.2	6	2.5			C10514368
NW40	55	41.2	6	2.5			C10516368
Stainless Steel AISI 316L DIN 1.4404							
NW10	30	12.2	6	2.5			C10511366
NW16	30	17.2	6	2.5			C10512366
NW25	40	26.2	6	2.5			C10514366
NW40	55	41.2	6	2.5			C10516366
NW50	75	52.2	6	2.5			C10517366



Size	A	B	C	D	E	F	Ordering Number
------	---	---	---	---	---	---	-----------------

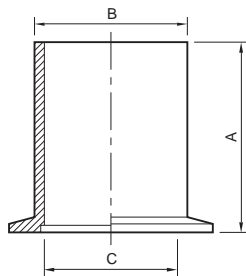
### Full Nipple

aluminium BS LM 25 DIN 3.2371

NW10	60						C10511409
NW16	80						C10512409
NW25	100						C10514409
NW40	130						C10516409

Stainless Steel AISI 316L DIN 1.4404

NW10	60						C10511433
NW16	80						C10512433
NW25	100						C10514433
NW40	130						C10516433
NW50	140						C10517433



For inch tube: D= tube OD

### Long Flange Weld Stub

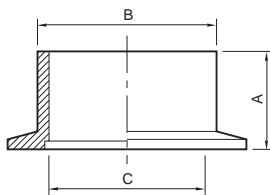
Stainless Steel AISI 316L DIN 1.4404

For metric tube

NW10	70	15	10				C10511316
NW16	70	20	16				C10512316
NW25	70	28	24				C10514316
NW40	70	44.5	41				C10516616
NW50	70	57	51				C10517316

For inch tube

NW10	40	12.7	9.3	½			C10504080
NW16	40	19.1	15.7	¾			C10504101
NW25	40	25.4	22	1			C10504223
NW40	40	38.1	34.7	1½			C10504324
NW50	40	50.8	47.4	2			C10504351



For inch tube: D= tube OD

### Short Flange Weld Stub

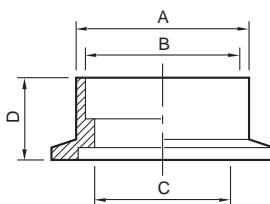
Stainless Steel AISI 316L DIN 1.4404

For metric tube

NW10	30	15	10				C10511311
NW16	30	20	16				C10512311
NW25	30	28	24				C10514311
NW40	30	44.5	41				C10516611
NW50	30	57	51				C10517311

For inch tube

NW10	12.7	12.7	9.3	½			C10504079
NW16	12.7	19.1	15.7	¾			C10504100
NW25	12.7	25.4	22	1			C10504222
NW40	19.1	38.1	34.7	1½			C10504323
NW50	19.1	50.8	47.4	2			C10504350

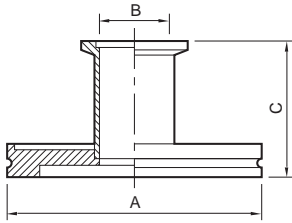


E= tube OD, mm  
F= tube OD, inches

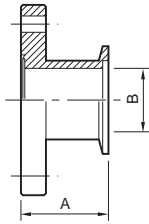
### Weld Socket Flange for Inch Tube

Stainless Steel AISI 316L DIN 1.4404

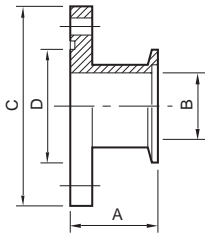
NW16	15.5	13	11.4	12.7	12.7	½	C10504102
NW16	22.1	19.3	17.3	12.7	19.1	¾	C10504103
NW25	28.6	25.9	22.1	12.7	25.4	1	C10504224
NW40	44.5	38.6	34.9	12.7	38.1	1½	C10504325
NW50	57.2	51.3	47.5	12.7	50.8	2	C10504353



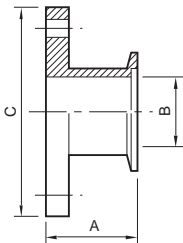
Size	A	B	C	D	E	F	Ordering Number
<b>Adaptor NW/ISO</b>							
Stainless Steel AISI 316L DIN 1.4404							
NW25/ISO63	95	25	50				C10007115
NW40/ISO63	95	40	50				C10007116
NW40/ISO80	110	40	118				C10008002
NW40/ISO100	130	40	50				C10009122
NW50/ISO63	95	50	50				C10007118
NW50/ISO80	110	50	118				C10008003
NW50/ISO100	130	50	50				C10009123



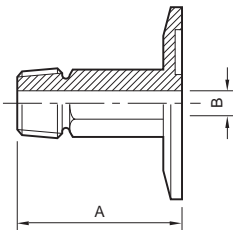
<b>Adaptor NW/CF</b>							
Stainless Steel AISI 316L DIN 1.4404							
NW16/DN16CF/1½	52.7	15.8					C10503104
NW16/DN40CF/2¾	45.3	15.8					C10503105
NW25/DN40CF/2¾	45.3	22					C10503207
NW40/DN40CF/2¾	45.3	40					C10503305
NW50/DN63CF/4½	49.5	50					C10503405



<b>Adaptor NW/ASA with O-Ring Groove</b>							
Stainless Steel AISI 316L DIN 1.4404							
NW40/2 inch ASA	46	40	152	86.9			C10503310
NW40/3 inch ASA	46	40	190	118			C10503311
NW50/2 inch ASA	46	50	152	86.9			C10503410

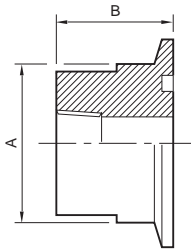


<b>Adaptor NW/ASA without O-Ring Groove</b>							
Stainless Steel AISI 316L DIN 1.4404							
NW40/1½ inch ASA	46	40	127				C10503303
NW40/2 inch ASA	46	40	152				C10503300
NW50/2 inch ASA	46	50	152				C10503400



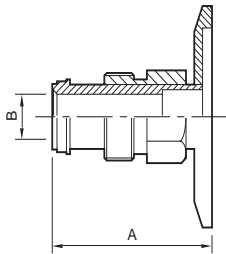
<b>Adaptor NW/NPT Threaded Pipe Male</b>							
Stainless Steel AISI 316L DIN 1.4404							
NW16/½ inch NPT male	40	4.7					C10501102
NW16/¼ inch NPT male	50	7.1					C10501103
NW25/½ inch NPT male	40	4.7					C10501217
NW25/¼ inch NPT male	50	7.1					C10501218
NW25/½ inch NPT male	75	11.9					C10501219
NW25/¾ inch NPT male	75	15.9					C10501220
NW40/¼ inch NPT male	50	7.1					C10501303
NW40/½ inch NPT male	75	11.9					C10501304
NW40/¾ inch NPT male	75	15.9					C10501305
NW40/1 inch NPT male	75	22.2					C10501306
NW50/½ inch NPT male	75	11.9					C10501501
NW50/1 inch NPT male	75	22.2					C10501503



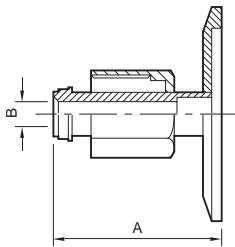


Size	A	B	C	D	E	F	Ordering Number
<b>Adaptor NW/NPT Threaded Pipe Female</b>							
aluminium ISO 6082 DIN 3.2315							
NW10 <sup>1</sup> / <sub>8</sub> inch NPT female	15.8	19.1					C10501070
NW16 <sup>1</sup> / <sub>8</sub> inch NPT female	15.8	19.1					C10501104
NW25 <sup>1</sup> / <sub>8</sub> inch NPT female	22.4	19.1					C10501221
NW40 <sup>1</sup> / <sub>8</sub> inch NPT female	31.8	25.4					C10501307
NW10 <sup>1</sup> / <sub>4</sub> inch NPT female	15.8	19.1					C10501071
NW16 <sup>1</sup> / <sub>4</sub> inch NPT female	15.8	19.1					C10501105
NW25 <sup>1</sup> / <sub>4</sub> inch NPT female	22.4	19.1					C10501222
NW40 <sup>1</sup> / <sub>4</sub> inch NPT female	31.8	25.4					C10501308

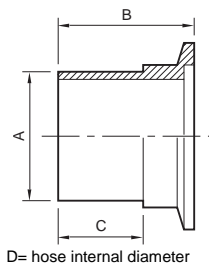
Stainless Steel AISI 316L DIN 1.4404							
NW10 <sup>1</sup> / <sub>8</sub> inch NPT female	15.8	19.1					C10501072
NW16 <sup>1</sup> / <sub>8</sub> inch NPT female	15.8	19.1					C10501106
NW25 <sup>1</sup> / <sub>8</sub> inch NPT female	22.4	19.1					C10501223
NW40 <sup>1</sup> / <sub>8</sub> inch NPT female	31.8	25.4					C10501309
NW10 <sup>1</sup> / <sub>4</sub> inch NPT female	15.8	19.1					C10501073
NW16 <sup>1</sup> / <sub>4</sub> inch NPT female	15.8	19.1					C10501107
NW25 <sup>1</sup> / <sub>4</sub> inch NPT female	22.4	19.1					C10501224
NW40 <sup>1</sup> / <sub>4</sub> inch NPT female	31.8	25.4					C10501310



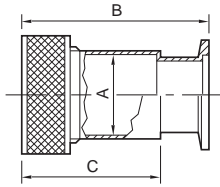
<b>Adaptor NW/VCR Male</b>							
Stainless Steel AISI 316L DIN 1.4404							
NW16 <sup>1</sup> / <sub>4</sub> inch VCR male	35.6	4.8					C10501108
NW16 <sup>1</sup> / <sub>2</sub> inch VCR male	41.4	10.4					C10501110
NW25 <sup>1</sup> / <sub>4</sub> inch VCR male	35.6	4.8					C10501225
NW25 <sup>1</sup> / <sub>2</sub> inch VCR male	40.6	10.4					C10501227
NW40 <sup>1</sup> / <sub>4</sub> inch VCR male	35.6	4.8					C10501311
NW40 <sup>1</sup> / <sub>2</sub> inch VCR male	40.6	10.4					C10501313
NW50 <sup>1</sup> / <sub>4</sub> inch VCR male	35.6	4.8					C10501508



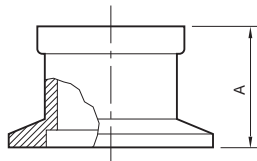
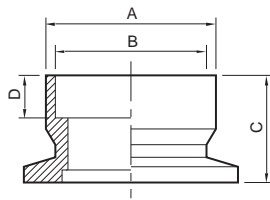
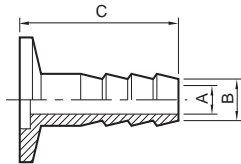
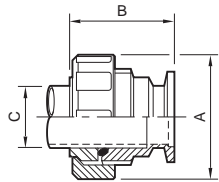
<b>Adaptor NW/VCR Female</b>							
Stainless Steel AISI 316L DIN 1.4404							
NW16 <sup>1</sup> / <sub>4</sub> inch VCR female	35.6	4.8					C10501109
NW16 <sup>1</sup> / <sub>2</sub> inch VCR female	41.4	10.4					C10501111
NW25 <sup>1</sup> / <sub>4</sub> inch VCR female	35.6	4.8					C10501226
NW25 <sup>1</sup> / <sub>2</sub> inch VCR female	40.6	10.4					C10501228
NW25 <sup>3</sup> / <sub>4</sub> inch VCR female	54.4	15.7					C10501230
NW40 <sup>1</sup> / <sub>4</sub> inch VCR female	35.6	4.8					C10501312
NW40 <sup>1</sup> / <sub>2</sub> inch VCR female	40.6	10.4					C10501314



<b>Adaptor PVC Hose</b>							
Stainless Steel AISI 316L DIN 1.4404							
NW10 <sup>1</sup> / <sub>2</sub> inch hose	12.7	32	20	12.7			C10504081
NW16 <sup>1</sup> / <sub>2</sub> inch hose	12.7	32	20	12.7			C10504104
NW16 <sup>3</sup> / <sub>4</sub> inch hose	19.1	32	20	19.1			C10504105
NW25 <sup>3</sup> / <sub>4</sub> inch hose	19.1	38.1	26	19.1			C10504266
NW25 <sup>1</sup> / <sub>1</sub> inch hose	25.4	38.1	26	25.4			C10504225
NW40 <sup>1</sup> / <sub>1</sub> / <sub>2</sub> inch hose	38.1	50	38.1	38.1			C10504326
NW50 <sup>1</sup> / <sub>2</sub> inch hose	47.4	55	41	50.8			C10504352



D= tube od in mm  
E= tube OD in inches



Temperature range -40 to 380 °C,  
Temperature gradient <3 °C min<sup>-1</sup>

Size	A	B	C	D	E	F	Ordering Number
------	---	---	---	---	---	---	-----------------

### Gauge Tube Adaptor and Compression O-Ring

Stainless Steel AISI 316L DIN 1.4404 Fluoroelastomer O-ring

NW10	13.1	50	33	12.7	½		C10502001
NW16	6.7	32	–	6.4	¼		C10502101
NW16	13.1	50	33	12.7	½		C10502102
NW16	19.4	56	40	19.1	¾		C10502103
NW25	13.1	50	33	12.7	½		C10502201
NW25	19.4	58	40	19.1	¾		C10502202
NW25	25.8	62	46	25.4	1		C10502203
NW40	13.1	58	33	12.7	½		C10502300
NW40	19.4	63.5	40	19.1	¾		C10502301
NW40	25.8	71	46	25.4	1		C10502302
NW40	29	74	49	28.6	1⅛		C10502303
NW40	38.4	84	63.5	38.1	1½		C10502304
NW50	19.4	63.5	40	19.1	¾		C10502400
NW50	25.8	71	46	25.4	1		C10502401
NW50	51.1	87	66	50.8	2		C10502404

### Compression Fitting

aluminium

NW10	44	43	14/15				C10520050
------	----	----	-------	--	--	--	-----------

### Nozzle

aluminium ISO 6082 DIN 3.2315

NW10	7	12	40				C10511645
NW25	7	12	40				C10514645
NW40	7	12	40				C10516645

### Coupling Body

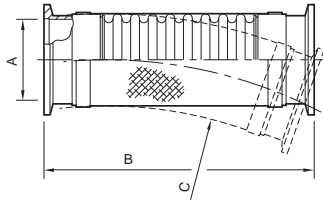
Brass

NW10	18	15.2	13	6			C10511328
NW25	32	28.2	20	8			C10514328
NW40	46	42.2	18	8			C10516628

### NW Optical Viewpoint

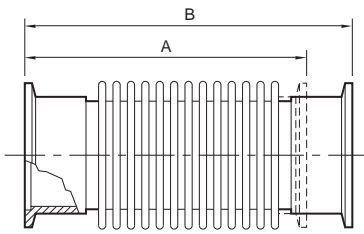
Body: Stainless Steel AISI 316L DIN 1.4404; Mounting: Nilo K; Glass: Borosilicate (8250 Schott)

NW40	23.6						C10516407
NW50	31.8						C10517407



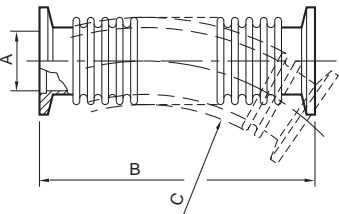
C= minimum bend radius, static  
 D= minimum bend radius, dynamic  
 E= maximum operating pressure, bar absolute

Size	A	B	C	D	E	F	Ordering Number
<b>Braided Flexible Exhaust Pipeline</b>							
Stainless Steel AISI 316L DIN 1.4404							
NW25	26.2	135	50	320	10.0		C10514294
NW40	41.2	135	80	400	10.0		C10516294
NW50	52.2	135	100	450	10.0		C10517294
NW25	26.2	250	50	320	10.0		C10514295
NW40	41.2	250	80	400	10.0		C10516295
NW50	52.2	250	100	450	10.0		C10517295
NW25	26.2	500	50	320	10.0		C10514296
NW40	41.2	500	80	400	10.0		C10516296
NW50	52.2	500	100	450	10.0		C10517296
NW25	26.2	1000	50	320	10.0		C10514297
NW40	41.2	1000	80	400	10.0		C10516297
NW50	52.2	1000	100	450	10.0		C10517297



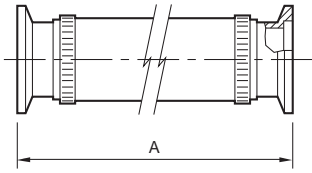
C= maximum operating pressure, bar absolute

Size	A	B	C	Ordering Number
<b>Flexible Bellows</b>				
Stainless Steel AISI 316L DIN 1.4404				
NW10	102	123	1.2	C10511670
NW16	102	123	1.2	C10512670
NW25	102	123	1.2	C10514670
NW40	102	123	1.2	C10516670
NW50	102	123	1.2	C10517670



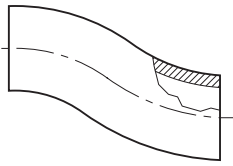
C= minimum bend radius, static  
 D= minimum bend radius, dynamic  
 E= maximum operating pressure, bar absolute

Size	A	B	C	D	E	F	Ordering Number
<b>Flexible Pipelines</b>							
Stainless Steel AISI 316L DIN 1.4404							
NW10	12.2	250	30	100	1.5		C10511285
NW16	17.2	250	30	130	1.5		C10512285
NW25	26.2	250	50	210	1.5		C10514285
NW40	41.2	250	80	260	1.5		C10516285
NW50	52.2	250	100	320	1.5		C10517285
NW10	12.2	500	30	100	1.5		C10511286
NW16	17.2	500	30	130	1.5		C10512286
NW25	26.2	500	50	210	1.5		C10514286
NW40	41.2	500	80	260	1.5		C10516286
NW50	52.2	500	100	320	1.5		C10517286
NW10	12.2	750	30	100	1.5		C10511300
NW16	17.2	750	30	130	1.5		C10512300
NW25	26.2	750	50	210	1.5		C10514300
NW40	41.2	750	80	260	1.5		C10516300
NW50	52.2	750	100	320	1.5		C10517300
NW10	12.2	1000	30	100	1.5		C10511287
NW16	17.2	1000	30	130	1.5		C10512287
NW25	26.2	1000	50	210	1.5		C10514287
NW40	41.2	1000	80	260	1.5		C10516287
NW50	52.2	1000	100	320	1.5		C10517287



Size	A	B	C	D	E	F	Ordering Number
<b>Reinforced PVC Tube with NW Flanges and Hose Clamps</b>							
Stainless Steel AISI 316L DIN 1.4404							
NW10	500						C10511055
NW16	500						C10512055
NW25	500						C10514055
NW40	500						C10516055
NW50	500						C10517055
NW10	1000						C10511155
NW16	1000						C10512155
NW25	1000						C10514155
NW40	1000						C10516155
NW50	1000						C10517155

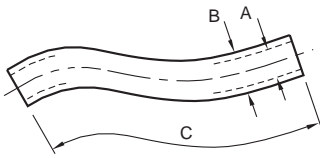
Maximum operating pressure 1 bar absolute, Temperature 5 to 60 °C



#### Reinforced PVC Tube, 1 metre

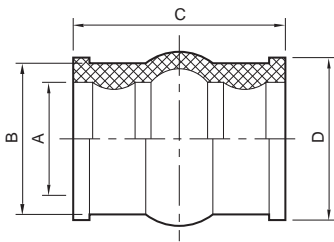
	Europe	N. America
½ inch ID tube	N/A	A63012220
¾ inch ID tube	H02100016	U30002173
1 inch ID tube	H02100017	A63012343
1½ inch ID tube	H02100018	U30000484
2 inch ID tube	H02100019	U30003837

Maximum operating pressure 1 bar absolute, Temperature 5 to 60 °C



#### Neoprene Rubber Tube

5 x 19 mm	5	19	1000	H02100002
7 x 17 mm	7	17	1000	H02100003
9 x 25 mm	9	25	1000	H02100004
12 x 28 mm	12	28	1000	H02100005
20 mm x 34 mm	20	34	1000	H02100006
Reinforced hose	25	32	305	C06600025



#### Moulded Sleeve

Neoprene							
NW10	13	21	38	23			C26501002
NW25	27	36	55	38			C26501004