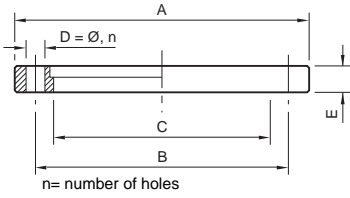
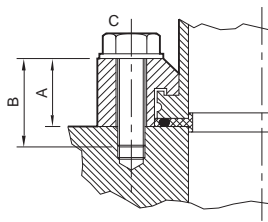


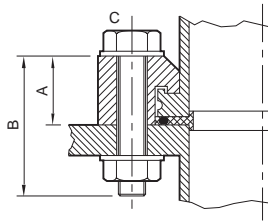
# ISO fittings



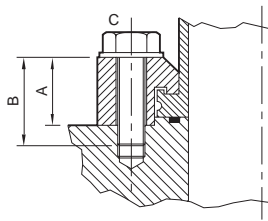
Size	A	B	C	D	E	F	Ordering Number
<b>Rotatable Flange with Fitting Kit</b>							
Mild steel nickel plated							
ISO63	130	110	95.5	Ø9,4	12		C10007010
ISO80	145	125	110	Ø9,8	12		C10008012
ISO100	165	145	130.5	Ø9,8	12		C10009010
ISO160	225	200	180.7	Ø11,8	16		C10011010
ISO200	285	260	240.7	Ø11,12	16		C10012010
ISO250	335	310	290.7	Ø11,12	16		C10013010
ISO320	425	395	371	Ø14,12	20		C10014012



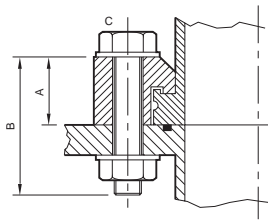
Size	A	B	C	D	Ordering Number
<b>Half Claw Clamp for use with Centring Ring (Tapped Holes)</b>					
Zinc plated mild steel body, stainless steel bolt					
ISO63	22.5	35	M8	4	C10007151
ISO100	22.5	35	M8	8	C10007151
ISO160	23	40	M10	8	C10011151
ISO200	23	40	M10	12	C10011151
ISO250	23	45	M10	12	C10011151
ISO320	36.5	60	M12	12	C10014151
ISO400	36.5	60	M12	16	C10014151
ISO500	36.5	60	M12	16	C10014151



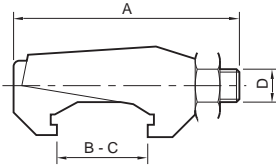
Size	A	B	C	D	Ordering Number
<b>Half Claw Clamp for use with Centring Ring (Clear Holes)</b>					
Zinc plated mild steel body, stainless steel bolt					
ISO63	22.5	35	M8	4	C10007150
ISO100	22.5	35	M8	8	C10007150
ISO160	23	40	M10	8	C10011150
ISO200	23	40	M10	12	C10011150
ISO250	23	45	M10	12	C10011150
ISO320	30.5	60	M12	12	C10014150
ISO400	30.5	60	M12	16	C10014150
ISO500	30.5	60	M12	16	C10014150



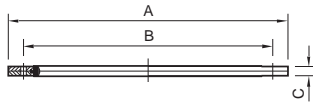
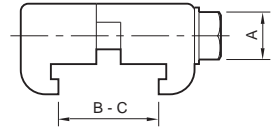
Size	A	B	C	D	Ordering Number
<b>Half Claw Clamp for use with O-ring groove (tapped holes)</b>					
Zinc plated mild steel body, stainless steel bolt					
ISO63	18.6	35	M8	4	C10007093
ISO100	18.6	35	M8	8	C10007093
ISO160	19	40	M10	8	C10011093
ISO200	19	40	M10	12	C10011093
ISO250	19	40	M10	12	C10011093
ISO320	31	50	M12	12	C10014093
ISO400	31	50	M12	16	C10014093
ISO500	31	50	M12	16	C10014093



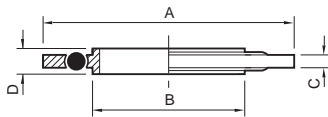
Size	A	B	C	D	Ordering Number
<b>Half Claw Clamp for use with O-ring Groove (Clear Holes)</b>					
Zinc plated mild steel body, stainless steel bolt					
ISO63	18.6	45	M8	4	C10007149
ISO100	18.6	45	M8	8	C10007149



ISO63 requires 4 clamps; ISO80-160 requires 4-8 clamps; ISO200-320 requires 6-12 clamps; ISO400-500 requires 8-16 clamps



Use ISO polymer Co-Seals only for high vacuum applications  $<10^{-6}$  mbar). In other applications, use the trapped O-ring seal; O-ring seals have higher mechanical strength.



Size A B C D E F Ordering Number

#### Claw Clamps

Zinc plated 1.1181 steel

ISO63/ISO250	60	22	33	M10			C10007090
ISO320/ISO500	75	32	42	M12			C10014090

#### Claw Clamps

aluminium

ISO63/100	–	22	33	M8			C10007156
ISO160/250	–	24	38	M10			C10011094
ISO320/500	–	35	56	M12			C10014094

#### Co-Seal

Nylon, nitrile

ISO40	101	80	4.2				B27158458
ISO63	116	110	4.2				B27158063
ISO100	151	145	4.2				B27158070
ISO160	200	190	5.7				B27158073

Fluoroelastomer

ISO40	101	80	4.2				B27158457
ISO63	116	110	4.2				B27158064
ISO100	151	145	4.2				B27158071
ISO160	200	190	5.7				B27158074

#### Trapped O-Ring

aluminium centring-ring, aluminium outer ring

Fluoroelastomer

ISO63	95	70	3.9	8			C10521001
ISO100	128	102	3.9	8			C10523001
ISO160	179	153	3.9	8			C10524001



Size	A	B	C	D	E	F	Ordering Number
------	---	---	---	---	---	---	-----------------

### Centring-ring with O-Ring

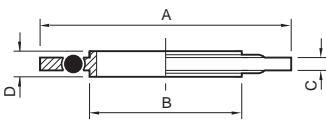
Stainless steel AISI 316L centring-ring

Nitrile

ISO63	70	3.9	8				C10007173
ISO80	83	3.9	8				C10008173
ISO100	102	3.9	8				C10009173
ISO160	153	3.9	8				C10011173
ISO200	213	3.9	8				C10012173
ISO250	261	3.9	8				C10013173
ISO320	318	5.6	14				C10014173
ISO400	400	5.6	14				C10015173
ISO500	501	5.6	14				C10016173

Fluoroelastomer

ISO63	70	3.9	8				C10007174
ISO80	83	3.9	8				C10008174
ISO100	102	3.9	8				C10009174
ISO160	153	3.9	8				C10011174
ISO200	213	3.9	8				C10012174
ISO250	261	3.9	8				C10013174
ISO320	318	5.6	14				C10014174
ISO400	400	5.6	14				C10015174
ISO500	501	5.6	14				C10016174



### Trapped O-Ring

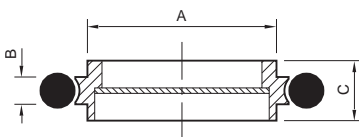
Stainless steel AISI 316L centring ring with aluminium outer ring

Nitrile

ISO40	63	41	3.9	8			B27158175
ISO63	95	70	3.9	8			B27158176
ISO80	109	83	3.9	8			B27158169
ISO100	128	102	3.9	8			B27158177
ISO160	179	153	3.9	8			B27158178
ISO200	239	213	3.9	8			B27158080
ISO250	287	261	3.9	8			B27158180
ISO320	358	318	5.6	14			B27158182
ISO400	440	400	5.6	14			B27158183
ISO500	541	501	5.6	14			B27158184

Fluoroelastomer

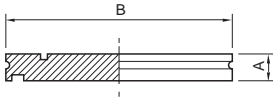
ISO40	63	41	3.9	8			B27158165
ISO63	95	70	3.9	8			B27158170
ISO80	109	83	3.9	8			B27158181
ISO100	128	102	3.9	8			B27158171
ISO160	179	153	3.9	8			B27158172
ISO200	239	213	3.9	8			B27158081
ISO250	287	261	3.9	8			B27158143
ISO320	358	318	5.6	14			B27158166
ISO400	440	400	5.6	14			B27158167
ISO500	541	501	5.6	14			B27158168



### ISO Centring-ring and Screen

Stainless steel AISI 316L DIN 1.4404 Mesh Ø 3.3 mm aperture, Ø 0.9 mm wire Fluoroelastomer O-ring

ISO63	70	3.9	8				C10521085
ISO80	83	3.9	8				C10522085
ISO100	102	3.9	8				C10523085
ISO160	153	3.9	8				C10524085

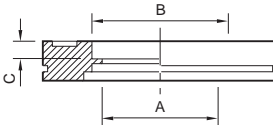


Size	A	B	C	D	E	F	Ordering Number
------	---	---	---	---	---	---	-----------------

#### Blanking Flange for use with Collar Flange

Stainless steel AISI 316L DIN 1.4404

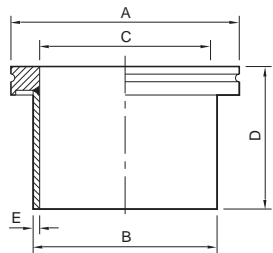
ISO63	12	95					C10007049
ISO80	12	110					C10008015
ISO100	12	130					C10009049
ISO160	12	180					C10011049
ISO200	12	240					C10012049
ISO250	12	290					C10013049
ISO320	17	370					C10014003
ISO500	17	550					C10016003



#### ISO Bored Flange

Stainless steel AISI 316L DIN 1.4404

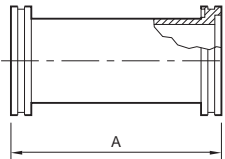
ISO63	60.2	63.5	5.5				C10007138
ISO100	98.3	102	5.5				C10009157
ISO160	148	152	5.5				C10011068
ISO200	197	203	5.5				C10012053
ISO250	248	254	5.5				C10013059



#### Collar Weld Stub

Stainless steel AISI 316L DIN 1.4404

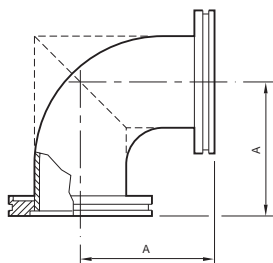
ISO63	95	76	70	100	3.2		C10007032
ISO80	110	76	83	100	3.2		C10008013
ISO100	130	108	102	100	3.2		C10009032
ISO160	180	159	153	100	3.2		C10011032
ISO200	240	219.1	213	100	3.2		C10012032
ISO250	290	267	261	100	3.2		C10013032



#### Nipple

Stainless steel AISI 316L DIN 1.4404

ISO63	176						C10007140
ISO100	216						C10009160
ISO160	276						C10011071
ISO200	356						C10012054
ISO250	416						C10013060

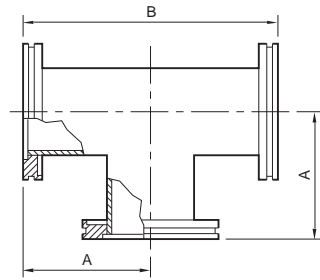


#### Elbow 90°

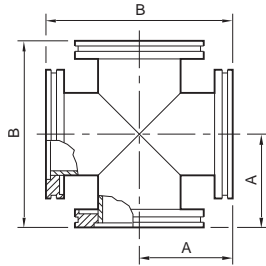
Stainless steel AISI 316L DIN 1.4404

ISO63	88						C10007203
ISO100	108						C10009203
ISO160*	138						C10011203
ISO200*	178						C10012203
ISO250*	208						C10013203

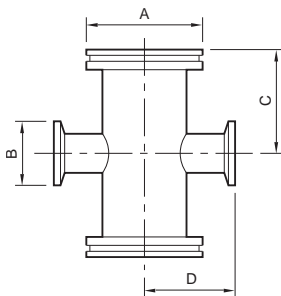
\* Shown dotted



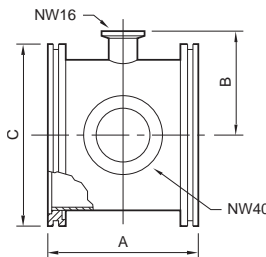
Size	A	B	C	D	E	F	Ordering Number
<b>T-piece</b>							
Stainless steel AISI 316L DIN 1.4404							
ISO63	88	176					C10007207
ISO100	108	216					C10009207
ISO160	138	276					C10011207
ISO200	178	356					C10012207



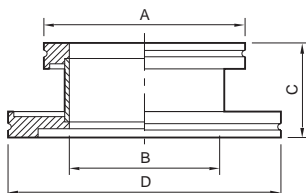
Size	A	B	C	D	E	F	Ordering Number
<b>Cross Piece</b>							
Stainless steel AISI 316L DIN 1.4404							
ISO63	88	176					C10007211
ISO100	108	216					C10009211



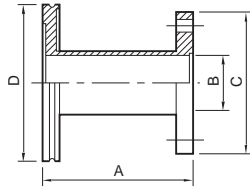
Size	A	B	C	D	E	F	Ordering Number
<b>ISO to NW Reducing Cross</b>							
Stainless steel AISI 316L DIN 1.4404							
ISO63/NW40	95	55	102	76			C10007232
ISO100/NW25	130	40	130	98			C10009231
ISO160/NW40	180	55	160	121			C10011232



Size	A	B	C	D	E	F	Ordering Number
<b>Connector with Two Lateral Flanges</b>							
Stainless steel AISI 316L DIN 1.4404							
ISO63	88	60	95				C10007215
ISO100	108	75	130				C10009215
ISO160	138	100	180				C10011215

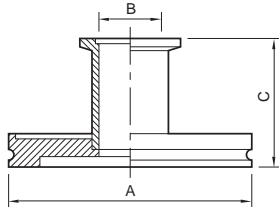


Size	A	B	C	D	E	F	Ordering Number
<b>ISO/ISO Adapting Piece</b>							
Stainless steel AISI 316L DIN 1.4404							
ISO80/ISO63	95	60	105	110	95		C10008021
ISO80/ISO100	110	73	105	130	110		C10009158
ISO100/ISO63	95	70	50	130	95		C10009111
ISO160/ISO63	95	70	50	180	95		C10011110
ISO160/ISO80	110	73	242	180	110		C10011069
ISO160/ISO100	130	102	50	180	130		C10011111

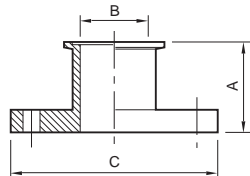


Supplied with bolts for tapped holes and bolts plus nuts and washers for plain holes

Size	A	B	C	D	E	F	Ordering Number
<b>Adaptor ISO Bolted/ISO Collar</b>							
Stainless steel AISI 316L DIN 1.4404							
ISO40 bolted/ISO63	106	41	100	95			C10007087
ISO63 bolted/ISO63	160	70	130	95			C10007155

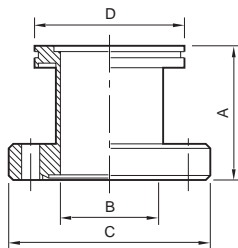


<b>Adaptor ISO/NW</b>							
Stainless steel AISI 316L DIN 1.4404							
ISO63/NW25	95	25	50				C10007115
ISO63/NW40	95	40	50				C10007116
ISO100/NW40	130	40	50				C10009122
ISO63/NW50	95	50	50				C10007118
ISO80/NW50	110	50	118				C10008003
ISO100/NW50	130	50	50				C10009123
ISO80/NW40	110	40	118				C10008002

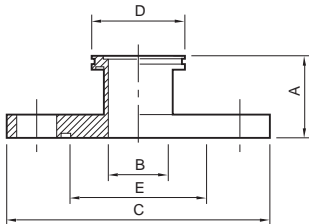


\* Supplied with bolts for tapped holes and bolts plus nuts and washers for plain holes

<b>Adaptor ISO Bolted/NW</b>							
Stainless steel AISI 316L DIN 1.4404							
					<b>Europe</b>	<b>N. America</b>	
ISO40 bolted/NW50*	50	41	100		C10005080	C10005080	
ISO40 bolted/NW40	69	40	100	No bolts supplied	N/A	A1516	
ISO63 bolted/NW50	50	50	130	No bolts supplied	N/A	A1509	
ISO63 bolted/NW40	68	40	130	No bolts supplied	N/A	A1448	
ISO63 bolted/NW40	50	40	130	No bolts supplied	N/A	A1574	
ISO40/ISO63 bolt kit for clear and tapped holes					N/A	NGV515000	

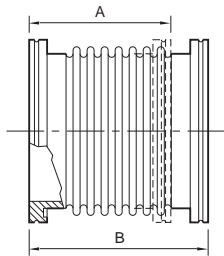


<b>Adaptor ISO/CF</b>							
Stainless steel AISI 316L DIN 1.4404							
ISO63/DN63CF/4½	110	60	114	95			C10007130
ISO100/DN100CF/6	111	98	152	130			C10009149
ISO100/DN160CF/8	113	148	203	180			C10011063

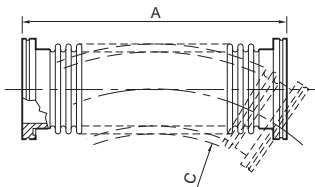


<b>Adaptor ISO/ASA</b>							
Stainless steel AISI 316L DIN 1.4404							
Without O-ring groove							
ISO63/2 inch ASA	106	60.2	152	95			C10007131
ISO80/3 inch ASA	106	72.9	190	110			C10008011
ISO100/3 inch ASA	106	98.3	190	130			C10009152
ISO100/4 inch ASA	106	98.3	229	130			C10009154
ISO160/6 inch ASA	112	148	279	180			C10011066

With O-ring groove							
ISO63/2 inch ASA	106	60.2	152	95	88.5		C10007132
ISO63/3 inch ASA	106	60.2	190	95	114.5		C10007134



C= maximum pressure, bar absolute



C= minimum band radius, static  
D= minimum band radius, dynamic  
E= maximum pressure, bar absolute

Size	A	B	C	D	E	F	Ordering Number
<b>Flexible Bellows</b>							
Stainless steel AISI 316L DIN 1.4404							
ISO63	106	127	1.5				C10007670
ISO80	106	127	1.5				C10008028
ISO100	107	127	1.5				C10009670
ISO160	170	220	1.5				C10011670
ISO200	170	220	1.5				C10012670
ISO250	170	220	1.5				C10013670

Size	A	B	C	D	E	F	Ordering Number
<b>Flexible Pipelines</b>							
Stainless steel AISI 316L DIN 1.4404							
ISO63	250		140	360	1.4		C10007285
ISO100	250		200	550	1.3		C10009285
ISO63	500		140	360	1.4		C10007286
ISO100	500		200	550	1.3		C10009286
ISO63	750		140	360	1.4		C10007288
ISO80	750		160	420	1.4		C10008024
ISO100	750		200	550	1.3		C10009288
ISO63	1000		140	360	1.4		C10007287
ISO100	1000		200	550	1.3		C10009287

## Pump Hook-Up Kits



Pump hook-up kits are available as convenient boxed sets containing components, seals and clamps to connect pumps to mating flanges.

We offer a number of standard hook-up kits to simplify the installation of dry vacuum pumps.

Each kit has the required spool piece (if needed), bellows, seals and claw-clamps for direct connection of the dry pump to the appropriate size fore-line. All exhaust lines include NW40 braided flexibles.

Kits are available with gate valves and can include a dead leg to reduce particulates from falling directly into the pump inlet.

For greater protection, KIT714101 includes an ITO catchpot.

KIT715101 can be used with (but does not include) a Water Cooled Trap. Consult Edwards for more details.

## Ordering Information

Product Description	Order No.
Straight inlet, no gate valve, 40 mm fore-line	KIT710040
Straight inlet, no gate valve, 50 mm fore-line	KIT710050
Straight inlet, no gate valve, 63 mm fore-line	KIT710063
Straight inlet, no gate valve, 100 mm fore-line	KIT710100
Straight inlet, pneumatic gate valve, 63 mm fore-line	KIT712064
Straight inlet, pneumatic gate valve, 100 mm fore-line	KIT712101
Dead-leg inlet, pneumatic gate valve, 100 mm fore-line	KIT713101
Catchpot, pneumatic gate valve, 100 mm fore-line	KIT714101
Dead-leg inlet, pneumatic gate valve, 100 mm fore-line for water cooled trap (not included)	KIT715101