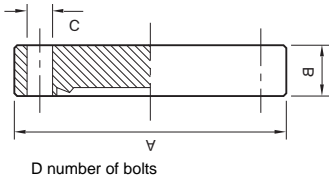
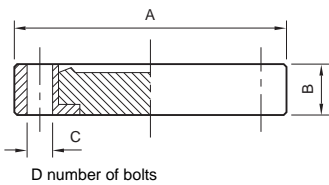


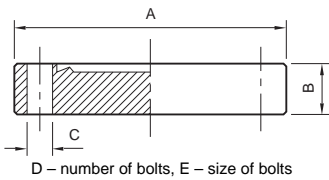
CF Flange Fittings



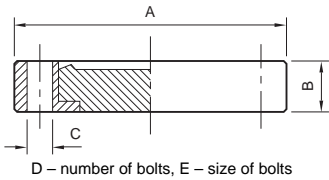
Size	A	B	C	D	E	F	Ordering Number
Blank Flange Non-Rotatable Clear							
Stainless steel AISI 304L DIN 1.4306							
Metric	Inch						
DN16CF	1½	34	7.6	4.3	6		C10001200
DN40CF	2¾	70	12.7	6.7	6		C10005200
DN63CF	4½	114	17.4	8.3	8		C10007400
DN100CF	6	152	19.9	8.3	16		C10009400
DN160CF	8	203	22.3	8.3	20		C10011300
DN200CF	10	254	24.6	8.3	24		C10012300



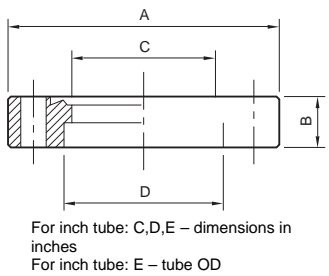
Size	A	B	C	D	E	F	Ordering Number
Blank Flange Rotatable Clear							
Stainless steel AISI 304L DIN 1.4306							
Metric	Inch						
DN16CF	1½	34	7.6	4.3	6		C10001201
DN40CF	2¾	70	12.7	6.7	6		C10005201
DN100CF	6	152	19.9	8.3	16		C10009401



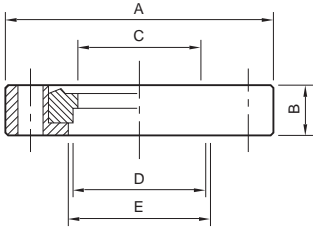
Size	A	B	C	D	E	F	Ordering Number
Blank Flange Non-Rotatable Tapped							
Stainless steel AISI 304L DIN 1.4306							
Metric	Inch						
DN16CF	1½	34	7.6	4.3	6	M4	C10001202
DN40CF	2¾	70	12.7	6.7	6	M6	C10005202
DN63CF	4½	114	17.4	8.3	8	M8	C10007402
DN100CF	6	152	19.9	8.3	16	M8	C10009402



Size	A	B	C	D	E	F	Ordering Number
Blank Flange Rotatable Tapped							
Stainless steel AISI 304L DIN 1.4306							
Metric	Inch						
DN100CF	6	152	19.9	8.3	16	M8	C10009403
DN160CF	8	203	22.3	8.3	20	M8	C10011303



Size	A	B	C	D	E	F	Ordering Number
Bored Weld Flange Non-Rotatable Clear							
Stainless steel AISI 304L DIN 1.4306							
For metric tube							
Metric	Inch						
DN40CF	2¾	70	12.7	36.9	38.2		C10005207
DN40CF	2¾	70	12.7	40.1	41.3		C10005208
DN63CF	4½	114	17.4	49.6	51.1		C10007405
DN100CF	6	152	19.9	99.4	101.9		C10009405
DN200CF	10	254	24.6	200.4	203.5		C10012305
For inch tube							
Metric	Inch						
DN63CF	4½	114	17.4	1.875	2.01	2	C10007405
DN100CF	6	152	19.9	3.81	4.01	4	C10009405
DN200CF	10	254	24.6	7.812	8.02	8	C10012305



For inch tube: C, D, F – dimensions in inches
For inch tube: F – tube OD

Bored Weld Flange Rotatable Clear

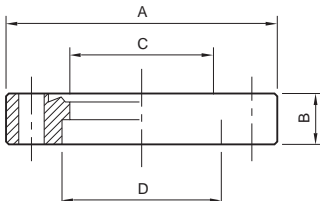
Stainless steel AISI 304L DIN 1.4306

For metric tube

Metric	Inch	A	B	C	D	E	F	Ordering Number
DN40CF	2¾	70	12.7	36.9	38.2	38.7		C10005213
DN63CF	4½	114	17.4	49.6	51.1	68.0		C10007407
DN63CF	4½	114	17.4	61.2	63.6	68.0		C10007408

For inch tube

Metric	Inch	A	B	C	D	E	F	Ordering Number
DN40CF	2¾	70	12.7	1.375	1.51	38.7	1½	C10005213
DN63CF	4½	114	17.4	1.875	2.01	68.0	2	C10007407
DN63CF	4½	114	17.4	2.375	2.51	68.0	2½	C10007408



For inch tube: C,D,F – dimensions in inches
E – size of bolts
For inch tube: F – tube OD

Bored Weld Flange Non-Rotatable Tapped

Stainless steel AISI 304L DIN 1.4306

For metric tube

Metric	Inch	A	B	C	D	E	F	Ordering Number
DN16CF	1½	34	7.6	12.7	12.7	M4		C10001218
DN40CF	2¾	70	12.7	36.9	38.2	M6		C10005219
DN40CF	2¾	70	12.7	40.1	41.3	M6		C10005220
DN63CF	4½	114	17.4	49.6	51.1	M8		C10007409
DN100CF	6	152	19.9	99.4	101.9	M8		C10009407
DN160CF	8	203	22.3	149.7	152.6	M8		C10011307

Bored Weld Flange Rotatable Tapped

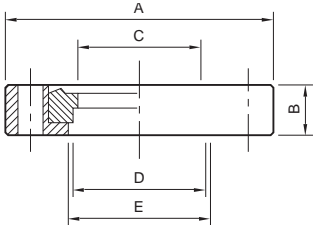
Stainless steel AISI 304L DIN 1.4306

For metric tube

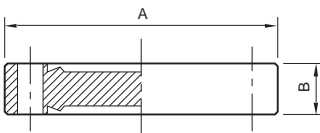
Metric	Inch	A	B	C	D	E	F	Ordering Number
DN40CF	2¾	70	12.7	36.9	38.2	38.7	M6	C10005227
DN63CF	4½	114	17.4	49.6	51.1	68.0	M8	C10007413
DN63CF	4½	114	17.4	61.2	63.6	68.0	M8	C10007414

For inch tube

Metric	Inch	A	B	C	D	E	F	Ordering Number
DN63CF	4½	114	17.4	1.875	2.01	68.0	¼-24	C10007415
DN100CF	6	152	19.9	3.81	4.01	104.9	¼-24	C10009410



For inch tube: C,D – dimensions in inches
F – size of bolts
Dimensions of suitable inch tube are shown in the table for non-rotatable tapped flanges (above)

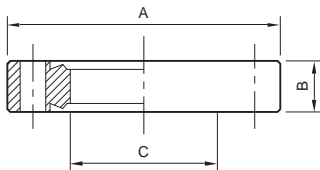


Double-Sided Blank Flange Clear

Stainless steel AISI 304L DIN 1.4306

For metric tube

Metric	Inch	A	B	Ordering Number
DN16CF	1½	34	7.6	C10001233
DN40CF	2¾	70	12.7	C10005233

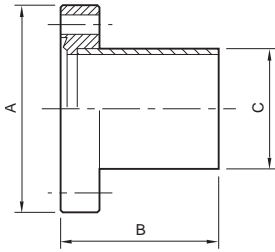


Double-Sided Bored Flange Clear

Stainless steel AISI 304L DIN 1.4306

For metric tube

Metric	Inch	A	B	C	Ordering Number
DN100CF	6	152	19.8	99.4	C10009412



Size

A B C D E F

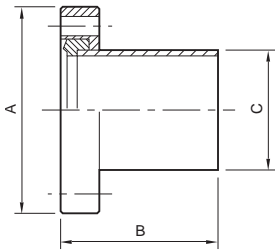
Ordering Number

Half-Nipple Non-Rotatable Clear

Stainless steel AISI 304L DIN 1.4306

Metric Inch

DN16CF	1½	34	38	19			C10001250
DN40CF	2¾	70	63	38			C10005250
DN63CF	4½	114	105	64			C10007450
DN100CF	6	152	135	102			C10009450
DN160CF	8	203	167	152			C10011450

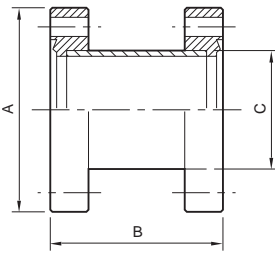


Half-Nipple Rotatable Clear

Stainless steel AISI 304L DIN 1.4306

Metric Inch

DN40CF	2¾	70	63	38			C10005251
DN63CF	4½	114	105	64			C10007451
DN100CF	6	152	135	102			C10009451
DN160CF	8	203	167	152			C10011451

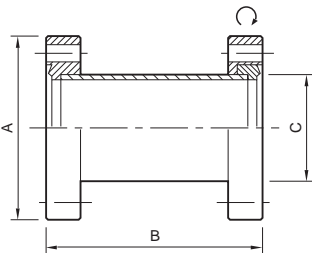


Full-Nipple Non-Rotatable Clear

Stainless steel AISI 304L DIN 1.4306

Metric Inch

DN40CF	2¾	70	126	38			C10005260
--------	----	----	-----	----	--	--	-----------

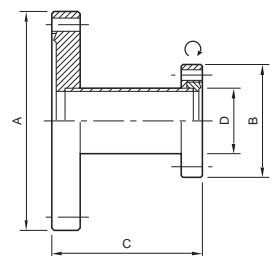


Full-Nipple Rotatable Clear

Stainless steel AISI 304L DIN 1.4306

Metric Inch

DN40CF	2¾	70	126	38			C10005261
DN63CF	4½	114	210	64			C10007461
DN100CF	6	152	270	102			C10009461

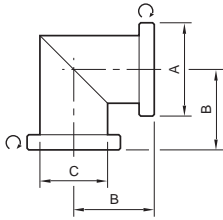


Reducing Nipple Rotatable Clear

Stainless steel AISI 304L DIN 1.4306

Metric Inch

DN40/16CF	2¾/1½	70	34	70	19		C10005370
DN63/40CF	4½/2¾	114	70	70	38		C10007570
DN100/40CF	6/2¾	152	70	70	38		C10009570

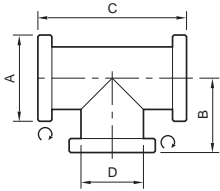


Elbow 90 ° Rotatable

Stainless steel AISI 304L DIN 1.4306

Metric Inch

DN16CF	1½	34	38	19			C10001300
DN40CF	2¾	70	63	38			C10005300
DN63CF	4½	114	105	64			C10007500

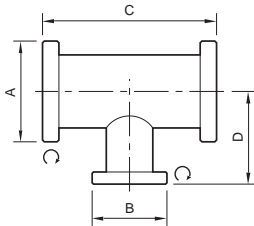


Tee Rotatable

Stainless steel AISI 304L DIN 1.4306

Metric Inch

DN40CF	2¾	70	63	126	38		C10005310
DN63CF	4½	114	105	210	64		C10007510

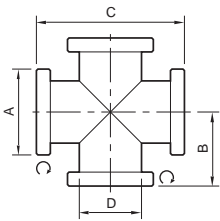


Reducing Tee Rotatable

Stainless steel AISI 304L DIN 1.4306

Metric Inch

DN40/16CF	2¾/1½	70	34	126	60		C10005350
DN63/40CF	4½/2¾	114	70	210	77		C10007551
DN100/40CF	6/2¾	152	70	270	95		C10009551
DN160/63CF	8/4½	203	114	334	120		C10011552

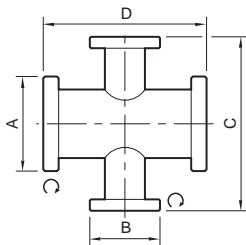


4-Way Cross Rotatable

Stainless steel AISI 304L DIN 1.4306

Metric Inch

DN40CF	2¾	70	63	126	38		C10005320
--------	----	----	----	-----	----	--	-----------

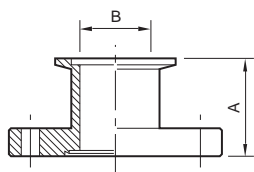


Reducing Cross Rotatable

Stainless steel AISI 304L DIN 1.4306

Metric Inch

DN40/16CF	2¾/1½	70	34	120	126		C10005360
DN100/40CF	6/2¾	152	70	190	270		C10009561

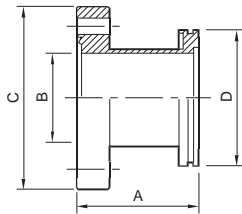


Adaptors NW/CF

Stainless steel AISI 316L DIN 1.4404

Metric/inch

NW16/DN16CF/1½	52.7	15.8					C10503104
NW16/DN40CF/2¾	45.3	15.8					C10503105
NW25/DN40CF/2¾	45.3	22					C10503207
NW40/DN40CF/2¾	45.3	40					C10503305
NW50/DN63CF/4½	49.5	50					C10503405



Size

A B C D E F

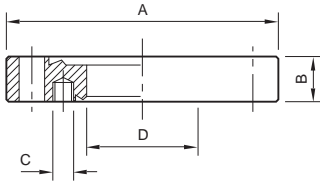
Ordering Number

Adaptors ISO/CF

Stainless steel AISI 316L DIN 1.4404

Metric/inch

ISO63/DN63CF/4½	110	60	114	95			C10007130
ISO100/DN100CF/6	111	98	152	130			C10009149
ISO160/DN160CF/8	113	148	203	180			C10011063

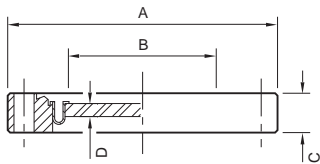


Zero Length Adaptor Major Clear/Minor Tapped

Stainless steel AISI 304L DIN 1.4306

Metric Inch

DN40/16CF	2¾/1½	70	12.7	M4	13.2		C10005240
DN63/40CF	4½/2¾	114	17.5	M6	36.9		C10007440
DN100/40CF	6/2¾	152	19.9	M6	36.9		C10009440
DN100/63CF	6/4½	152	19.9	M8	61.2		C10009441
DN63/40CF	4½/2¾	114	17.5	¼-28	36.9		C10007441



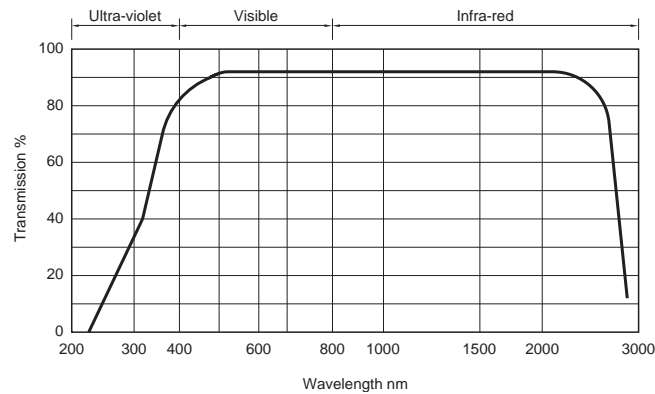
NW Zero Length Kodial Viewport

Stainless steel AISI 304L DIN 1.4306

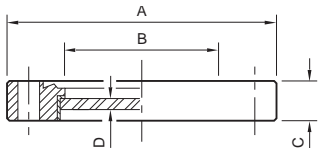
Metric Inch

DN16CF	1½	34	16	12.7	1		C10001600
DN40CF	2¾	70	38	12.7	2.5		C10005600
DN63CF	4½	114	63	17.4	3		C10007600
DN100CF	6	152	89	19.9	4		C10009600
DN160CF	8	203	136	22.3	6.5		C10011600

Bakeable to 350 °C, at no greater than 2 to 3 °C per minute.
Use annealed copper gaskets.



Kodial transmission curve



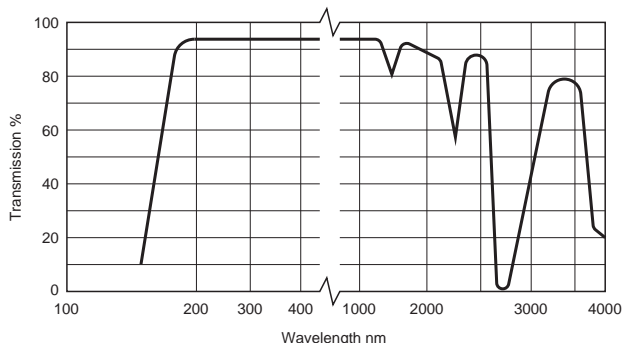
Bakeable to 200 °C, at no greater than 2 to 3 °C per minute.
Use annealed copper gaskets.

Size	A	B	C	D	E	F	Ordering Number
------	---	---	---	---	---	---	-----------------

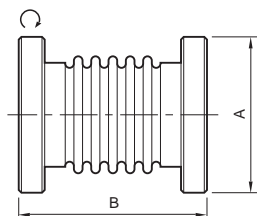
Zero Length Quartz Viewport

Stainless steel AISI 304L DIN 1.4306

Metric	Inch	A	B	C	D	E	F	Ordering Number
DN40CF	2¾	70	29.5	12.7	4			C10005610
DN63CF	4½	114	60	17.3	5			C10007610



Quartz transmission curve.

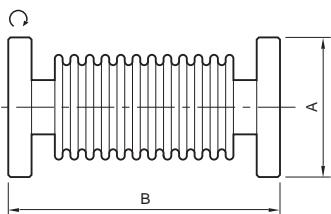


C – maximum pressure, bar absolute

Hydroformed Bellows Rotatable

Stainless steel AISI 304L DIN 1.4306

Metric	Inch	A	B	C	Ordering Number
DN16CF	1½	34	110	1.2	C10001340
DN40CF	2¾	70	160	1.2	C10005340

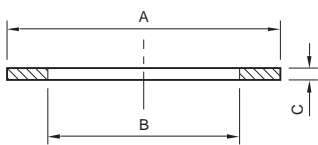


C – Minimum bend radius, static
D – Minimum bend radius, dynamic
E – Maximum pressure, bar absolute

Flexible Hose Rotatable

Stainless steel AISI 304L DIN 1.4306

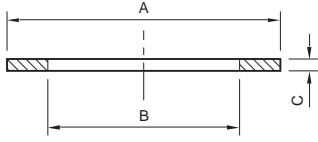
Metric	Inch	A	B	C	D	E	Ordering Number
DN40CF	2¾	70	250	80	260	1.5	C10005330
DN63CF	4½	114	250	140	360	1.5	C10007530
DN16CF	1½	34	500	30	130	1.5	C10001331
DN40CF	2¾	70	500	80	260	1.5	C10005331
DN63CF	4½	114	500	140	360	1.5	C10007531
DN100CF	6	152	750	200	550	1.5	C10009532
DN40CF	2¾	70	1000	80	260	1.5	C10005333
DN63CF	4½	114	1000	140	360	1.5	C10007533



D – For flange OD, mm; E – For flange OD, inch
F – Number per pack

Copper Gaskets

Metric	Inch	A	B	C	D	E	F	Ordering Number
DN16CF	1½	21	16	2	34	1.33	10	C10001290
DN40CF	2¾	48	37	2	70	2.75	10	C10005290
DN63CF	4½	82	63	2	114	4.5	10	C10007490
DN100CF	6	120	101	2	152	6	10	C10009290
DN160CF	8	171	152	2	203	8	5	C10011290
DN200CF	10	222	203	2	254	10	5	C10012290
DN250CF	12	270	254	2	304	12	5	C10013290



D – For flange OD, mm; E – For flange OD, inch
F – Number per pack

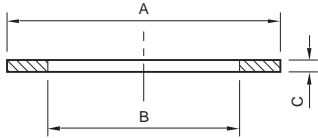
Size

A B C D E F

Ordering Number

Annealed Copper Gaskets

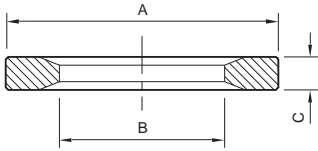
Metric	Inch	A	B	C	D	E	F	Ordering Number
DN16CF	1½	21	16	2	34	1.33	5	C10001270
DN40CF	2¾	48	37	2	70	2.75	5	C10005270
DN63CF	4½	82	63	2	114	4.5	5	C10007270
DN100CF	6	120	101	2	152	6	5	C10009270
DN160CF	8	171	152	2	203	8	5	C10011270
DN200CF	10	222	203	2	254	10	5	C10012270
DN250CF	12	270	254	2	304	12	5	C10013270



D – For flange OD, mm; E – For flange OD, inch
F – Number per pack

Silver Plated Copper Gaskets

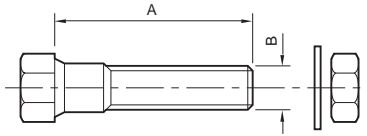
Metric	Inch	A	B	C	D	E	F	Ordering Number
DN16CF	1½	21	16	2	34	1.33	5	C10001280
DN40CF	2¾	48	37	2	70	2.75	5	C10005280
DN63CF	4½	82	63	2	114	4.5	5	C10007280
DN100CF	6	120	101	2	152	6	5	C10009280
DN160CF	8	171	152	2	203	8	5	C10011280
DN200CF	10	222	203	2	254	10	5	C10012280



D – For flange OD, mm; E – For flange OD, inch
F – Number per pack

Fluoroelastomer Gaskets

Metric	Inch	A	B	C	D	E	F	Ordering Number
DN16CF	1½	29	19	2	34	1.33	2	C10001620
DN40CF	2¾	50	38	3	70	2.75	2	C10005620
DN63CF	4½	76	64	3	114	4.5	2	C10007620
DN100CF	6	112	100	3	152	6	2	C10009620
DN160CF	8	162	150	3	203	8	2	C10011620



C – number per pack

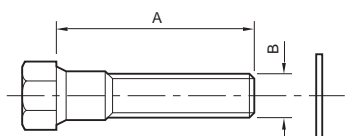
HEX Head Nut, Bolt and Washers for Clear Hole CF Flanges

Standard

Metric	Inch	A	B	C	D	E	F	Ordering Number
DN16CF	1½	20	M4	25				C10001630
DN40CF	2¾	35	M6	25				C10005630
DN63CF	4½	45	M8	25				C10007630
DN100CF	6	50	M8	25				C10009630
DN160CF	8	60	M8	25				C10011630
DN200CF	10	60	M8	25				C10012630
DN40CF	2¾	35	¼-28	25				C10005640
DN200CF	10	60	¾-24	25				C10012640

Silver Plated

Metric	Inch	A	B	C	D	E	F	Ordering Number
DN40CF	2¾	35	M6	25				C10005650
DN63CF	4½	45	M8	25				C10007650
DN100CF	6	50	M8	25				C10009650
DN160CF	8	60	M8	25				C10011650
DN200CF	10	60	M8	25				C10012650



C – number per pack

Size	A	B	C	D	E	F	Ordering Number
------	---	---	---	---	---	---	-----------------

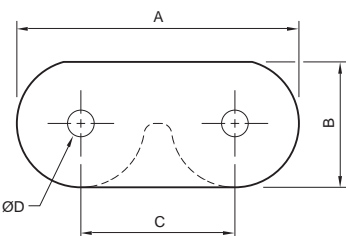
HEX Head Bolt and Washers for Tapped Hole CF Flanges

Standard

Metric	Inch						
DN40CF	2¾	25	M6	25			C10005670
DN63CF	4½	30	M8	25			C10007730

Silver Plated

Metric	Inch						
DN40CF	2¾	25	M6	25			C10005690
DN63CF	4½	30	M8	25			C10007690
DN100CF	6	35	M8	25			C10009690



E – number per pack

Plate Nuts

Metric	Inch						
DN40CF	2¾	41	11	29	M6	25	C10005710
DN63CF	4½	51	12	35	M8	25	C10007710
DN40CF	2¾	41	11	29	¼-28	25	C10005720