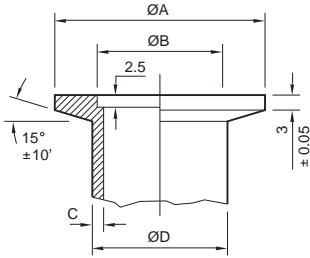


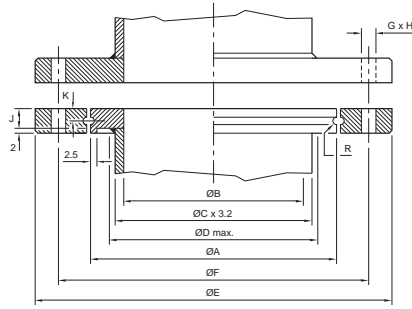
Dimensions

NW Dimensions



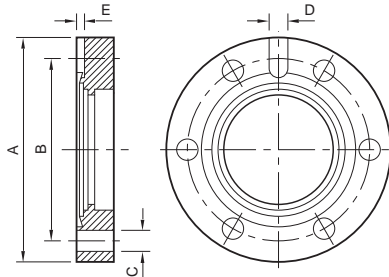
	A	B	C	D
NW10	30	12.2	2	14
NW16	30	17.2	2	20
NW20	40	22.2	2	25
NW25	40	26.2	2	28
NW32	55	34.2	2	38
NW40	55	41.2	2	44.5
NW50	75	52.2	2	57

ISO-K, ISO-F Dimensions



	A	B	C	D	E	F	G	H	J	K	R
ISO63	95	70	76.1	80	130	110	9	4	10	5	1.5
ISO80	110	83	88.9	95	145	125	9	8	10	5	1.5
ISO100	130	102	114.3	115	165	145	9	8	10	5	1.5
ISO160	180	153	160.3	165	225	200	11	8	10	5	2.5
ISO200	240	213	219	225	285	260	11	12	10	5	2.5
ISO250	290	261	273	275	335	310	11	12	10	5	2.5
ISO320	370	318	324	355	425	395	14	12	15	7.5	2.5
ISO400	450	400	406	435	510	480	14	16	15	7.5	4
ISO500	550	501	508	535	610	580	14	16	15	7.5	4
ISO630	690	630	660	660	750	720	14	20	20	10	5

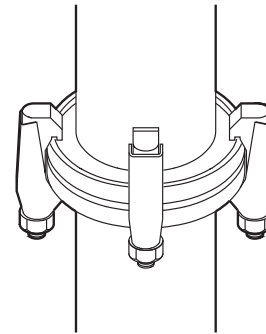
CF dimensions



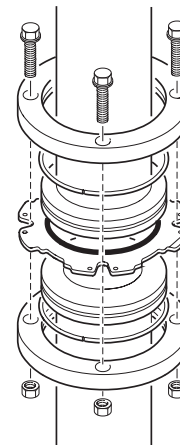
Nominal	A, mm	A, inch	B	C	D	E	Bolt Holes
DN16CF	34	1 1/8	27	4.4	-	-	6
DN40CF	70	2 3/4	58.7	6.6	-	-	6
DN63CF	114	4 1/2	92.1	8.4	6	3	8
DN100CF	152	6	130.2	8.4	6	3	16
DN160CF	202	8	181	8.4	6	3	20
DN200CF	253	10	231.8	8.4	6	3	24
DN250CF	306	12	284	8.4	6	3	32

ISO Flange Assembly with Co-Seals

Two Fixed Collar Flanges with Claw Clamps



Two Rotatable Flanges



One Fixed Collar Flange, with One Rotatable Flange

